

HARD COVER SMYTH SEWN



ClosedOpen

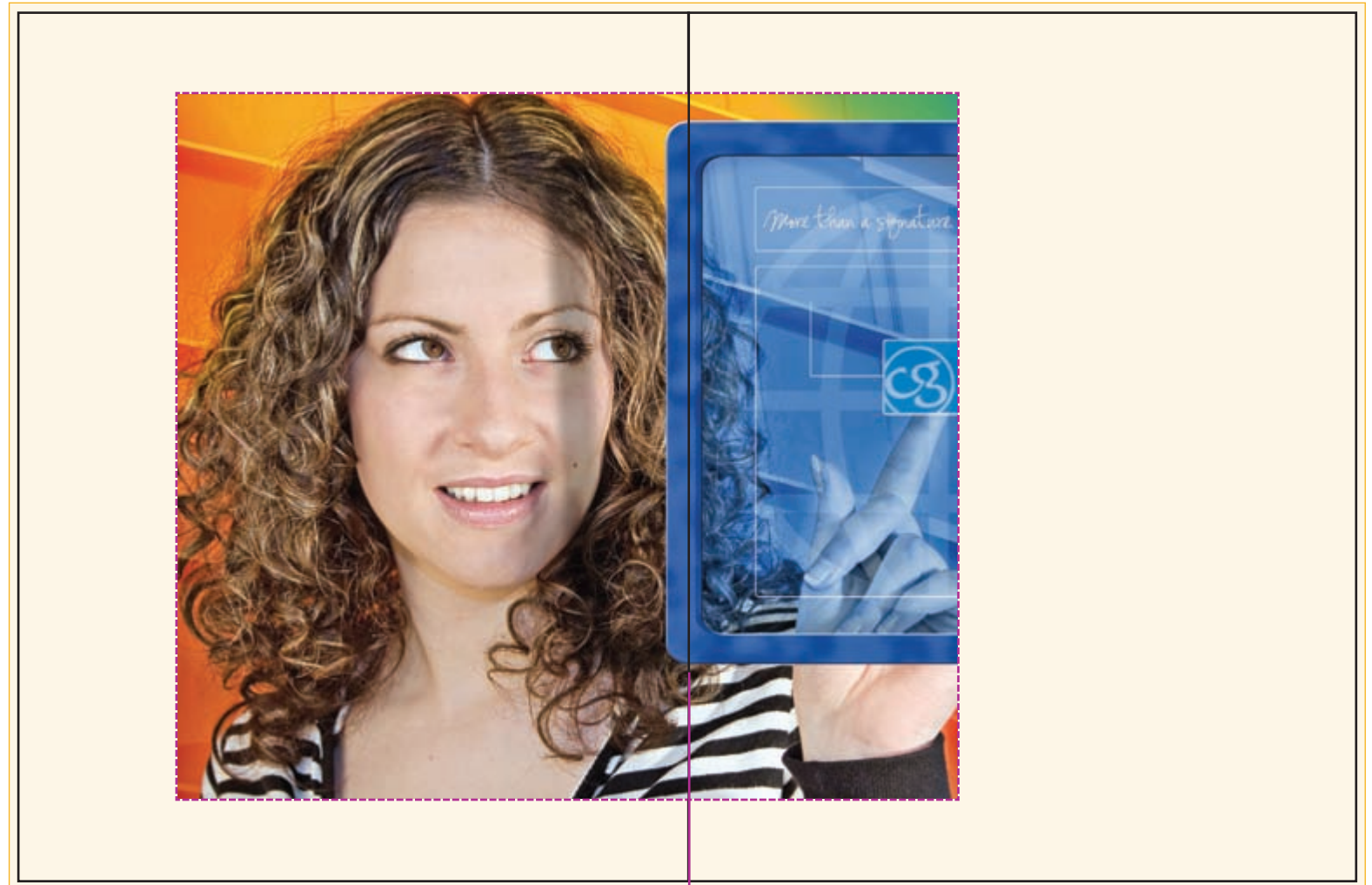
Smyth Sewn binding uses the entire final trim size for the image area. It has few limitations. Use caution when placing text near the spine edge. Smyth Sewn books are similar to a combination of side-sewn books and perfect-bound books. The signatures are sewn [similar to saddle stitch but all pages are secured with thread]; then stacked and glued. Generally a Smyth Sewn book is hardbound; however, soft cover is also available.

SmythSew

Binding by stitching along the fold and gluing signatures together; this allows the book to lie flat when opened.

Document Size: Set the document up for the final trim size. No photo manipulation required on crossovers.

Page Count: The number of pages in your book must be divisible by 4 [i.e., 4, 8, 12, 16, 20, 24, 28, 32, 36...].



No manipulation needed on crossover.

Bleed (0.125") on top, open side and bottom.

HardCover

Document Size: Final trim size, plus wrap, ditch/spine crimp [0.25"] and spine.

Example:

$$\begin{array}{r}
 \text{Page size:} \quad 8.5 \quad \times \quad 11 \\
 + \quad \frac{(.25) \quad (.25) \text{ ditch}}{ } \\
 = \quad 8.75 \quad \times \quad 11.25 \\
 \quad \quad \quad \frac{(\times 2) \quad (\times 0)}{ } \\
 = \quad 17.5 \quad \times \quad 11.25 \\
 + \quad \frac{(.625) \quad (.625) \text{ wrap}}{ } \\
 + \quad \frac{(.625) \quad (.625) \text{ wrap}}{ } \\
 = \quad 18.75 \quad \times \quad 12.5 \\
 + \quad \frac{(\text{spine}) \quad (0)}{ } \\
 \text{Cover size} = 18.75 \times 12.5 \\
 \quad \quad \quad + \text{ spine width}
 \end{array}$$

Wrap Allowance: Allow 0.625" for book wrap—add to all sides of the book.

Spine Marks: Tick marks need to be indicated on the page [see diagram at right]. Extend your spine 0.015625" beyond the spine edge to allow a small wrap. This will make the spine look full when viewed from end. To find out the spine width of your Smyth or Side Sew book, contact your sales representative.

Ditch/Spine Crimp: Extends horizontally 0.25" on each side of spine. For best results, center all text between the ditch and wrap inside edge.

