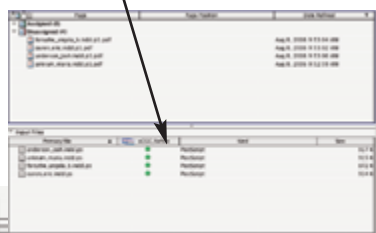


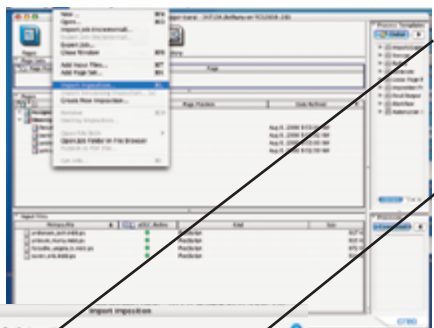
Setting up Imprint Business Cards



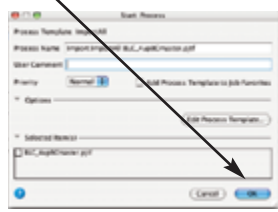
- 1. Set up Prinergy Job.
- 2. Refine Postscripts of BCs.



- 3. Import Imposition Template.
Under Edit > Import Imposition

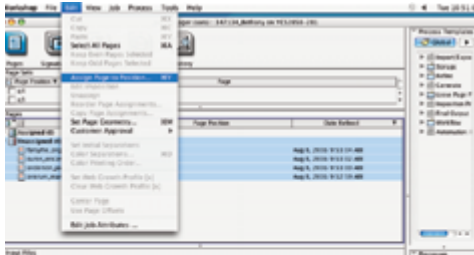


- a) Location: Imposition on OSX1 05_Common_JTS Commercial Ryobi Masters
- b) Click on correct master (ends in pjtf)
- c) Click through next screen.



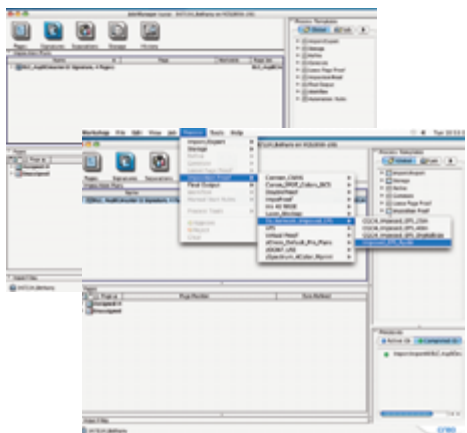
- 4. Assign Page to Position.

Under Edit > Assign Page to Position (Splat Y)

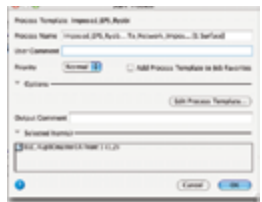


- a) If pages fall in no order, click OK.
- b) Click through next screen.

- 5. Publish EPS file.

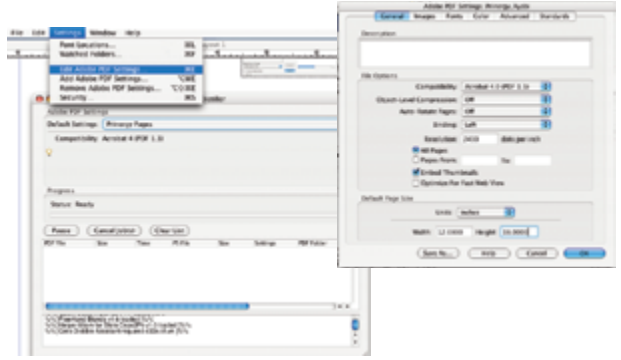


- a) Click on signatures located at the top of the palette.
- b) Go to Process > Imposition Proof > To Network Impose EPS > Imposed EPS Ryobi.
- c) Click through next screen of preset.



- 6. Create PDF file with Distiller.

In Distiller, edit Prinergy Preference to distill page at 12" x 18".



- 7. Open PDF in Acrobat.

- a) Crop pages to just outside of the crop marks.
- b) Save over file.
- c) Delete .eps file and mark location on ticket.