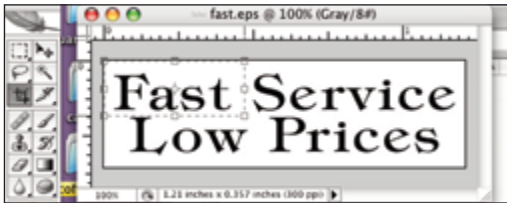
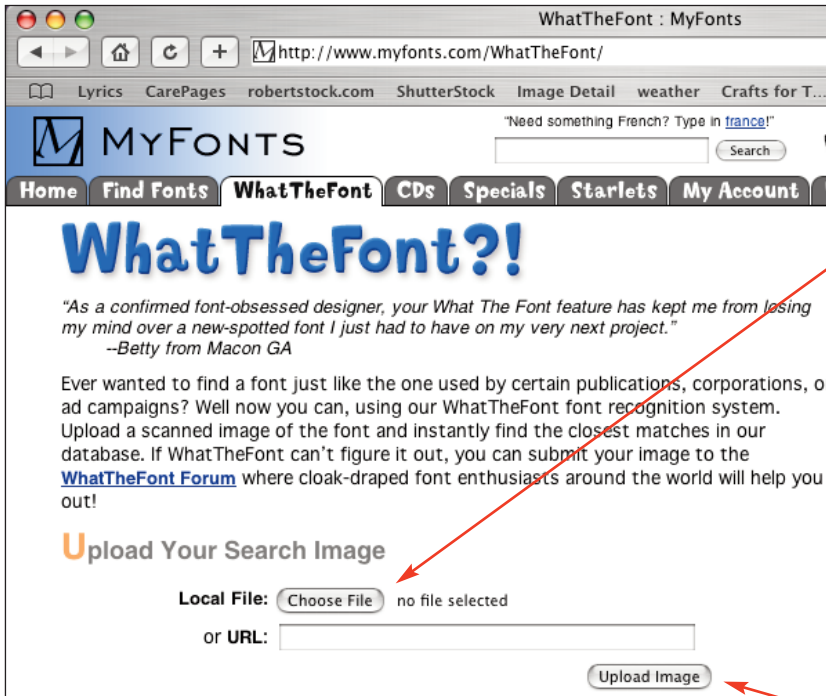


# IDENTIFYING FONTS

## Identifying fonts



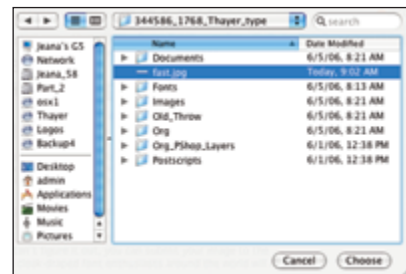
1. Open the type in Photoshop. Crop a portion of the type. Save it as a .jpg file. (Maximum file size is 360 x 275 pixels.)



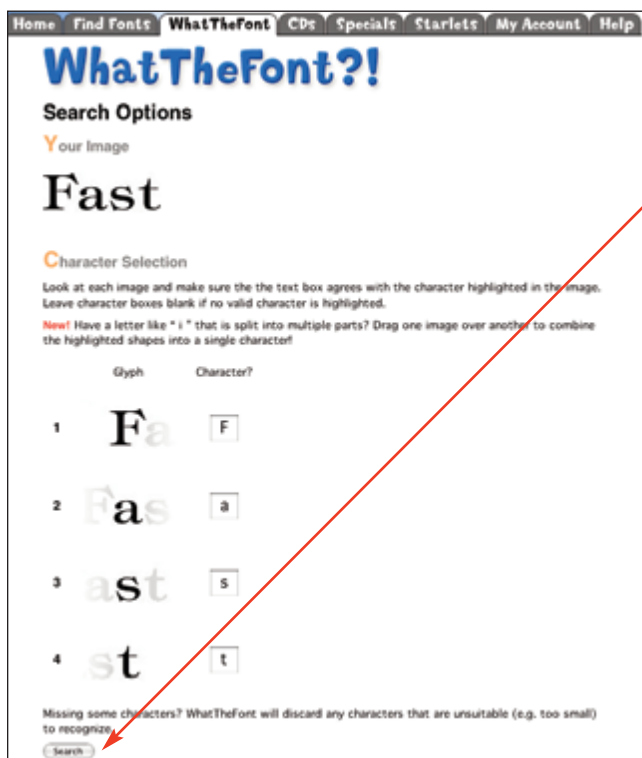
2. Go to [www.myfonts.com/WhatTheFont/](http://www.myfonts.com/WhatTheFont/).

3. Click the Choose File button.

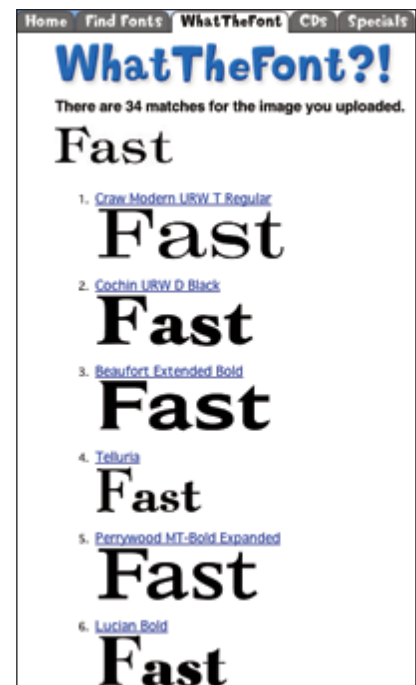
4. Select your image and click the Choose button.



5. Click the Upload Image button.



6. This window is asking you if these are the right letters. Change any of the letters that are wrong. If they are all okay, click the Search button.



7. The site will give you a series of suggested fonts. Look through the list to find one that matches your sample.