

GRADIENTS

Creating Gradients in Photoshop with noise added.

1. Create document the size of gradient.
2. Click on gradient tool. Then click on gradient color box.



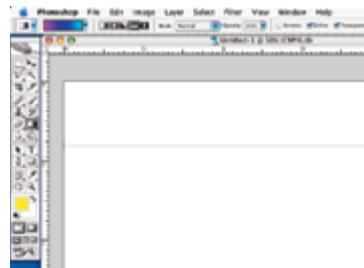
3. Select gradient, or create your own by clicking on the color markers located below the color bar. Then click on Color to add your own.



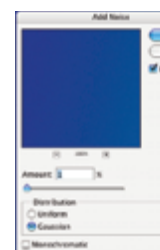
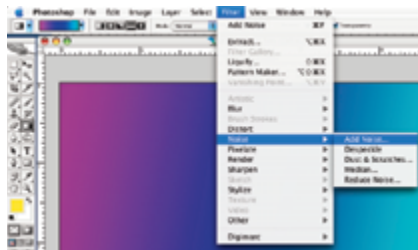
4. Continue with other colors you wish to add.



5. With gradient tool selected, click and drag to create gradient.



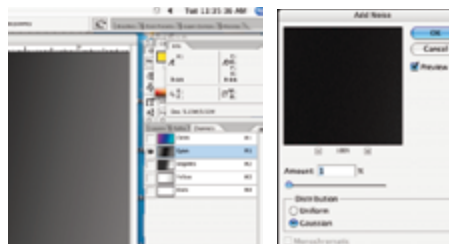
6. Add Noise. *Note: Beware—if too much is added, gradient will appear muddy. Or if no color is in a specific channel and the overall way is selected, color of gradient may be altered.*



1. Overall: Go to Filter > Noise > Add Noise. Amount may vary. Don't add too much or it will create a muddy look. Select Gaussian.

There are two ways to do this:

1. The easy way is to do the Overall change.
2. The other way is through Channels.



2. Channels: Using your Channels Palette, select each channel individually and add noise. If a channel has no color in it, do not add noise to it.